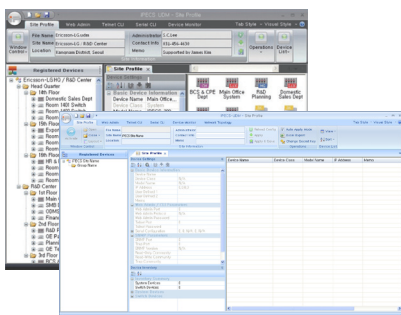


ETHERNET SWITCHES

Simpler and Smarter
Networking for the SME



Today, SMEs are facing more and more challenges with the growing complexity of IT solutions from its limited budgets and resources, however, they have to operate in the same business environment competing against larger enterprises. With the vision to deliver an optimized solution to best solve these challenges, iPECS Ethernet Switch families are designed to be simpler to install and smarter to manage with high reliability. iPECS Ethernet Switch can perfectly solve the needs from the varying environments and challenges with less effort and lower investment now and in the future.

Easy to install

iPECS Ethernet Switches have plug and play capabilities such as Auto-negotiation of speed and duplex mode, Auto-MDI/MDIX, at a glance intuitive status LEDs right on top of the ports. And also its intuitive web user interface makes the installation and administration much easier.

Advanced QoS(Quality of Service)

Prioritization of the data on the network is essential in order to ensure that mission critical applications such as voice are delivered in a timely manner. iPECS Ethernet Switches are able to classify packets into different priority queues and deliver each packet in the priority queues using WRR(Weighted Round Robin) or SPQ(Strict Priority Queuing) method.

Flexible PoE (Power over Ethernet)

iPECS Ethernet Switches are designed to support both 802.3af and 802.3at standard POE. Therefore, SMEs can flexibly and cost-effectively connect standard and high powered devices on a single PoE switch. In addition, the PoE control and monitoring can be easily managed via the intuitive web user interface.(POE models only)*

Green ethernet

iPECS Ethernet Switches incorporate the latest green ethernet technology to help you save energy costs. iPECS Ethernet Switches use either EEE(Energy Efficient Ethernet) or are able to detect link status and cable length allowing each port to dynamically configure providing maximum power efficiency.(Gigabit models only)*

Secure networking

iPECS Ethernet Switches support key security features like RADIUS authentication and authorization as well as multi-layer filtering. Web management sessions can be secured with HTTPS encryption.

Smart management using iPECS UDM

Ericsson-LG Enterprise offers an unique management tool, the iPECS UDM(Unified Device Manager), which enables the management of all iPECS product lines from IP telephony to data networking via a single management interface. iPECS UDM simplifies network administration and management through the use of a single consistent and familiar interface.

- System/switch device registration using site profile
- Device parameters and inventory information
- Web admin interface
- Telnet/serial command line interface(iPECS ES-3000 Series only)
- Device/port information and traffic monitoring using SNMP
- Ping/traceroute test
- Windows layout control and excel report export
- Topology map display, edit and export

iPECS Ethernet Switches

iPECS ES-4500G Series L3 Stacking Switches



ES-4526G

- 24 ports 10/100/1000 Base-T
- 4 ports Gigabit shared uplinks
- 2 ports 10 Gigabit XFP
- High availability
- IPv4 and IPv6 routing support



ES-4550G

- 48 ports 10/100/1000 Base-T
- 4 ports Gigabit shared uplinks
- 2 ports 10 Gigabit XFP
- High availability
- IPv4 and IPv6 routing support

iPECS ES-3000 Series L2 Managed Switches



ES-3026

- 24 ports 10/100 Base-TX
- 2 ports Gigabit combo uplinks



ES-3026P

- 24 ports 10/100 Base-TX with PoE
- 2 ports Gigabit combo uplinks



ES-3024G

- 24 ports 10/100/1000 Base-T
- 4 ports Gigabit shared uplinks



ES-3024GP

- 24 ports 10/100/1000 Base-T with PoE
- 4 ports Gigabit shared uplinks



ES-3052G

- 48 ports 10/100/1000 Base-T
- 4 ports Gigabit uplinks



ES-3052GP

- 48 ports 10/100/1000 Base-T with PoE
- 4 ports Gigabit uplinks

iPECS ES-2000 Series L2 Advanced Switched



ES-2026

- 24 ports 10/100 Base-TX
- 2 ports Gigabit combo uplinks



ES-2026P

- 24 ports 10/100 Base-TX with PoE
- 2 ports Gigabit combo uplinks



ES-2024G

- 24 ports 10/100/1000 Base-T
- 4 ports Gigabit shared uplinks



ES-2024GP

- 24 ports 10/100/1000 Base-T with PoE
- 4 ports Gigabit shared uplinks